

Mars Sand Dunes on the Move

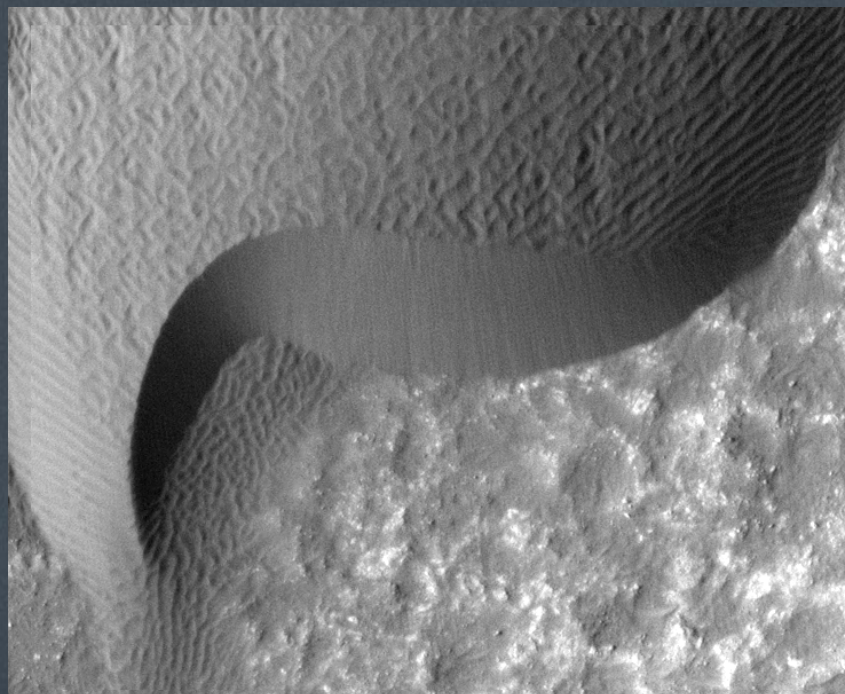
Old View: Winds strong enough to blow sand occur in just a few locations

New View: This happens in many places on the planet as shown in HiRISE camera pictures from MRO

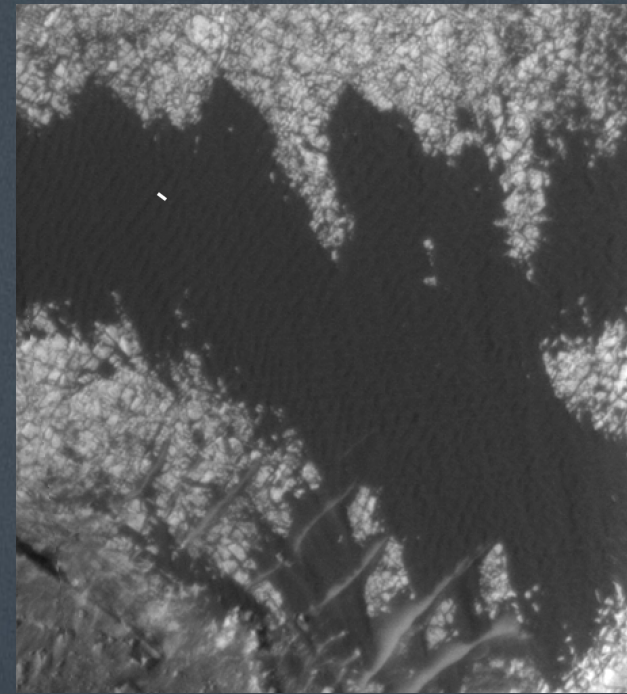
Why: Winds on Mars more gusty and carry more sand than previously thought

Implication: Current Mars winds capable of moving many dunes. Immobile dunes, which are probably hardened or covered by large grains, are markers for a different climate in the past.

Future work: Continued monitoring by MRO/HiRISE will advance our understanding of present and past surface and atmospheric processes on Mars.



*Moving dune in Herschel Crater
between March 3, 2007 and December 1, 2010.*



*Moving sand patch in Becquerel Crater
between November 24, 2006 and September 5, 2010.*