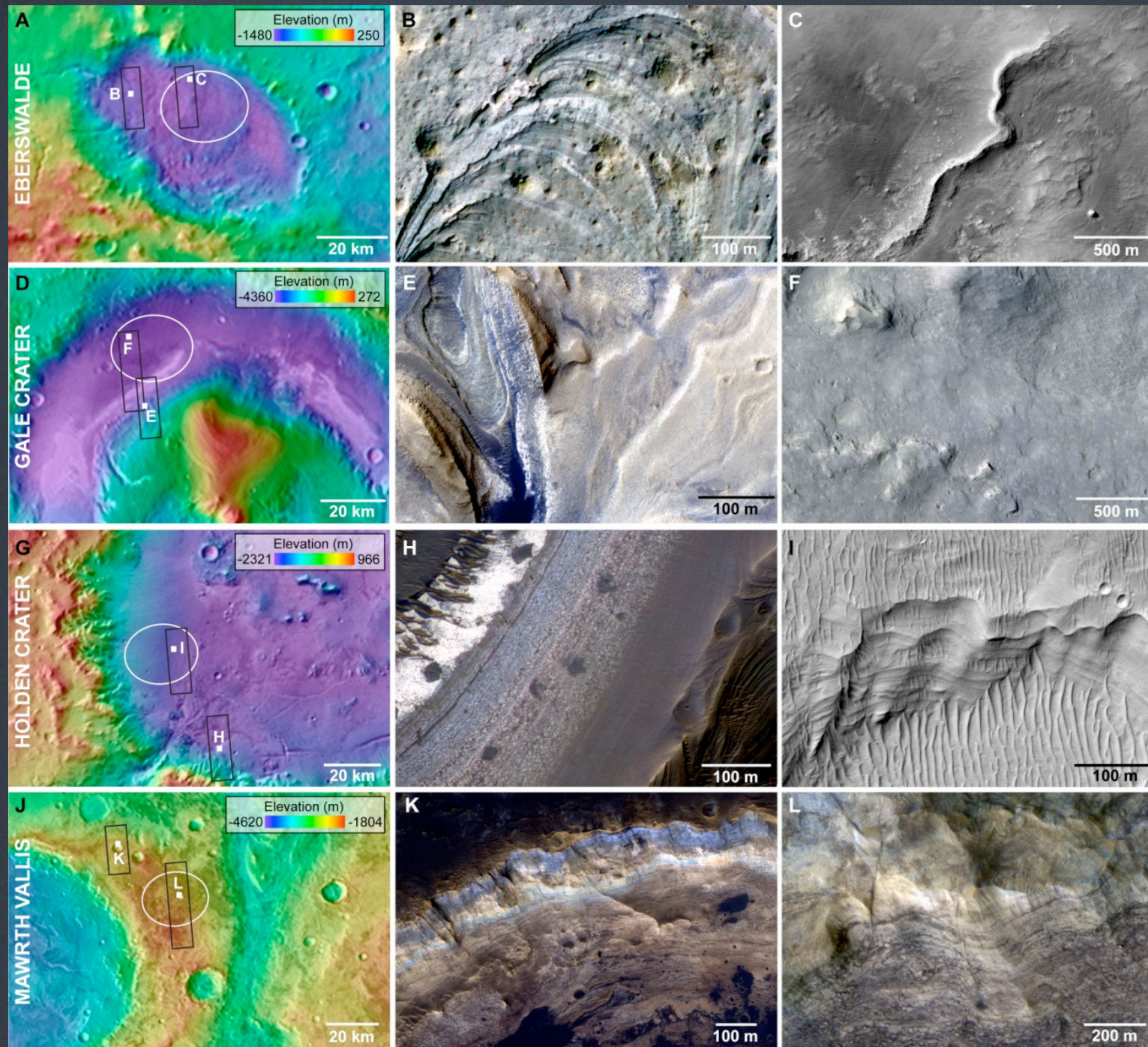


Selecting Landing Sites for MSL



- HiRISE and all of the MRO instruments have played a critical role in evaluating the science and engineering merits of the candidate MSL landing sites.
- Nearly 60 sites were imaged over the ~6 years preceding the launch of MSL, many of which were imaged on many separate occasions.
- The four final sites (left) include a delta in Eberswalde crater, a 5 km thick sedimentary sequence in Gale crater, layered putative lake deposits in Holden crater, and an ancient sequence of layered clay deposits to the west of Mawrth Vallis.

Grant, J. A., Golombek, M. P., Grotzinger, J. P., Wilson, S. A., Watkins, M. M., Vasavada, A. R., Griffes, J. L., and Parker, T. J., 2010, The science process for selecting the landing site for the 2011 Mars Science Laboratory, doi:10.1016/j.pss.2010.06.016.